

A photograph of two hikers in red jackets and backpacks walking on a rocky mountain trail. The hiker in the foreground is smiling and looking down. The background shows a vast valley with a winding river, surrounded by rugged mountains under a hazy sky. The text 'YUKON VISITOR STATISTICS YEAR-END REPORT 2006' is overlaid in white serif font at the bottom right.

YUKON VISITOR STATISTICS  
YEAR-END REPORT 2006

## **OVERVIEW**

THIS DOCUMENT IS INTENDED TO PROVIDE A SNAPSHOT OF YUKON'S 2006 TOURISM YEAR (JANUARY TO DECEMBER).

INCLUDED IS A SUMMARY OF THE YEAR, COMPARISONS TO VISITOR TRENDS IN THE REST OF CANADA AND CURRENT YUKON VISITOR STATISTICS:

YUKON BORDER CROSSING STATISTICS;

EUROPEAN AIR CHARTER STATISTICS;

YUKON VISITOR INFORMATION CENTRE STATISTICS;

YUKON BERINGIA INTERPRETIVE CENTRE STATISTICS;

YUKON RETAIL SALES;

YUKON FUEL PRICES; AND

U.S. EXCHANGE RATES.

FOR FURTHER INFORMATION ON THE 2006 YUKON VISITOR STATISTICS YEAR-END REPORT AND THE 2006 SEASON-END REPORT CONTACT THE DEPARTMENT OF TOURISM & CULTURE AT:

DEPARTMENT OF TOURISM & CULTURE  
PRODUCT DEVELOPMENT AND RESEARCH UNIT (L-1)  
Box 2703  
WHITEHORSE, YUKON Y1A 2C6  
PHONE: (867) 667-8410  
FAX: (867) 393-7005  
WEBSITE: [WWW.TIRC.GOV.YK.CA](http://WWW.TIRC.GOV.YK.CA)

## **CONTENTS**

YEAR-END SUMMARY	2
INTERNATIONAL TRAVEL TRENDS	3
EUROPEAN AIR CHARTER STATISTICS	4
WHITEHORSE AIRPORT STATISTICS	4
TOP 10 COUNTRIES & KEY REGIONS	5
BORDER CROSSING STATISTICS - MOTORCOACH	6
BORDER CROSSING STATISTICS - TRENDS	7
ANNUAL BORDER CROSSING STATISTICS	8
VISITOR INFORMATION CENTRE STATISTICS	10
YUKON MUSEUMS VISITOR STATISTICS	11
BERINGIA INTERPRETIVE CENTRE STATISTICS	12
YUKON RETAIL SALES	12
BORDER CROSSING STATISTICS - YUKON RIVER	13
YUKON AUTO FUEL PRICES (GASOLINE)	14
U.S. EXCHANGE RATES	15
BORDER CROSSING STATISTICS - SUMMER	16

## ECONOMIC OUTLOOK

A number of national and international issues/events, both economic and regulatory, influenced visitors' decisions not to visit Canada and Yukon during 2006. The increased value of the Canadian dollar and the price of fuel linked with the confusion associated with the Western Hemisphere Travel Initiative (WHTI) severely impacted same day and long-haul travel, reducing Yukon's private vehicle traffic for the second consecutive year.

During 2006, a total of 315,504 travelers visited Yukon from January through December, down 2.7% or 8,780 compared to the same period in 2005, according to Canada Border Services Agency.

Yukon fared better than Canada in 2006 in terms of visitation numbers. Over the year, total international visitors to Canada declined by 7.7%, while Yukon visitation only declined by 1.6%. Specifically; US visitors were down by 8.8% for Canada while Yukon registered a decline of 1.0%. Overseas visitors for Canada grew by 0.3% compared to Yukon's decrease of 5.8%.

By the end of December 2006, 109,470 passengers entered Yukon by motorcoach. This is an increase of 13,534 passengers or 14.1% over 2005, largely due to an increase of cruise ship day tour activity out of Skagway, Alaska.

Private vehicle traffic however, was down from 228,348 to 206,034 a decrease of 22,314 visitors, or 9.8%.

By country of origin: U.S. visitors were down from 230,655 to 228,279, a decrease of 2,376 or 1.0%; Canadian visitors were down from 30,662 to 27,030, a decrease of 3,632 or 11.8%; and international visitors were down from 28,669 to 27,007, a decrease of 1,662 or 5.8%.

Yukon's Visitor Information Centres reported a corresponding decline in visitation. Visitor Information Centres registered 223,624 visitors from May through September 2006. This amounted to a decrease of 12,128 visitors, or 5%, over the same period in 2005.

Anecdotal reports from a number of Yukon tourism operators indicated that despite this overall decline in the total number of visitors, certain sub-sectors or businesses which catered to these sub-sectors were pleased with the 2006 summer season. Wilderness adventure operators and businesses catering to the motorcoach travelers reported a good season. Operators focused on European markets performed well with those servicing the fly-drive and RV rental segments indicating an excellent season.

Indications from Yukon tourism operators also suggest they experienced a fall/winter season that was similar to 2005/2006. Wilderness adventure operators that specialize in dog sledding showed strong bookings and expect final levels to be an increase over the previous season.

## INTERNATIONAL TRAVEL TRENDS

Forecasters surveyed by the Conference Board of Canada and reported in the *March – April 2007 Travel Exclusive Key Trends for the Canadian Travel Industry* are positive regarding Canada's tourism prospects for 2007. They suggest that more Canadian travelers will choose a domestic holiday this summer and fewer will travel into the U.S. However, the U.S. travel market is not expected to improve in the near term, stifled by the high price of gasoline and a slowdown in the economy. Confusion over travel documents continues to negatively impact U.S. travel to Canada. Performance of Canada's traditional European markets is troubling, offering only modest growth potential in the near term.

For Yukon, the Department of Tourism and Culture forecasts a 2007 summer season much like that of 2006, with a few bright spots. Condor, a German charter airline serving Yukon, will add 10 flights to their schedule, commencing service at the same time as last year but extending the fall operation by nearly four weeks. Some operators are seeing improved bookings coming a bit earlier than last year and those serving the overnight and same day motorcoach market are encouraged by bookings. Finally, the White Pass & Yukon Route will initiate a new service from Skagway to Carcross, projecting that 20,000 passengers will ride this train.

The Yukon Government has entered into a joint marketing program with the two other northern territories to increase awareness of the North. This program is being conducted in an effort to support increased investment and activity in Yukon including growing visitation and promoting business opportunities.

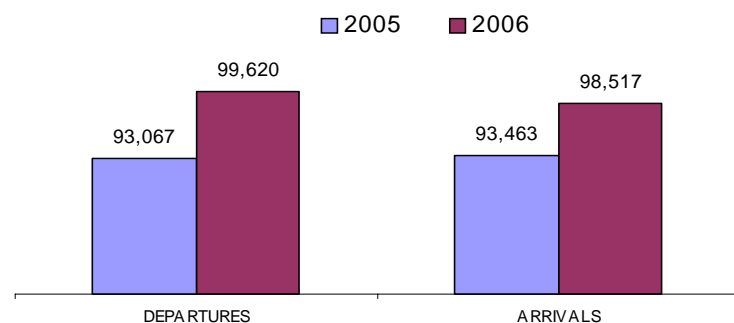
### EUROPEAN AIR CHARTER STATISTICS

2005	MAY	JUN	JUL	AUG	SEP	TOTALS
Flights	4	9	8	9	8	38
Passengers	326	1,025	1,117	1,294	562	4,324
2006	MAY	JUN	JUL	AUG	SEP	TOTALS
Flights	5	8	8	9	7	37
Passengers	360	800	1,113	1,408	633	4,314
+ / - % CHANGE	MAY	JUN	JUL	AUG	SEP	TOTALS
Flights	1	-1	0	0	-1	-1
% CHANGE	25.0%	-11.1%	0.0%	0.0%	-12.5%	-2.6%
Passengers	34	-225	-4	114	71	-10
% CHANGE	10.4%	-22.0%	-0.4%	8.8%	12.6%	-0.2%

SOURCE: CANADA BORDER SERVICES AGENCY

TOTALS INCLUDE VISITORS ARRIVING IN WHITEHORSE DIRECT FROM EUROPE, TOTALS DO NOT INCLUDE CANADIAN RESIDENTS OR GERMAN FLIGHT CREW.

### WHITEHORSE INTERNATIONAL AIRPORT PASSENGER TRAFFIC JANUARY - DECEMBER



**TOTAL ARRIVALS AND DEPARTURES FOR 2005:**  
186,530

**TOTAL ARRIVALS AND DEPARTURES FOR 2006:**  
198,137

SOURCE: WHITEHORSE AIRPORT - HIGHWAYS & PUBLIC WORKS (YTG)

TOTALS INCLUDE ALL PASSENGERS ARRIVING IN AND DEPARTING FROM WHITEHORSE ON COMMERCIAL FLIGHTS (JAN. TO DEC.).

### YUKON BORDER CROSSING STATISTICS TOP 10 COUNTRIES

	2005	2006	+ / -	% change
United States	230,655	228,279	-2,376	-1%
Canada	64,960	60,218	-4,742	-7%
Germany	8,426	6,809	-1,617	-19%
United Kingdom	5,454	5,867	413	8%
Switzerland	2,145	1,814	-331	-15%
Australia	3,797	4,315	518	14%
Netherlands	1,343	1,155	-188	-14%
France	631	760	129	20%
Austria	525	465	-60	-11%
Japan	563	399	-164	-29%

SOURCE: CANADA BORDER SERVICES AGENCY AND YUKON BUREAU OF STATISTICS

PASSENGER TOTALS DO NOT INCLUDE TRAIN VISITORS, THOSE IN COMMERCIAL VEHICLES, VISITORS ARRIVING BY AIR, OR MARINE ARRIVALS (DAWSON CITY).

THE CANADA CATEGORY INCLUDES YUKON RESIDENTS.

### YUKON BORDER CROSSING STATISTICS KEY REGIONS

	2,005	2,006	+ / -	% change
North America	296,197	289,050	-7,147	-2%
Europe	20,831	18,785	-2,046	-10%
Asia / Pasific	6,476	7,015	539	8%
Other	780	654	-126	-16%
Total	324,284	315,504	-8,780	-3%

SOURCE: CANADA BORDER SERVICES AGENCY AND YUKON BUREAU OF STATISTICS

PASSENGER TOTALS DO NOT INCLUDE TRAIN VISITORS, THOSE IN COMMERCIAL VEHICLES, VISITORS ARRIVING BY AIR, OR MARINE ARRIVALS (DAWSON CITY).

THE NORTH AMERICA CATEGORY INCLUDES YUKON RESIDENTS.

**YUKON BORDER CROSSING STATISTICS - MOTORCOACH**

MAY	2005	2006	+/-	% Change
Beaver Creek	431	316	-115	-26.7%
Fraser	11,234	13,687	2,453	21.8%
Little Gold	99	75	-24	-24.2%
Pleasant	19	15	-4	-21.1%
<b>Total</b>	<b>11,783</b>	<b>14,093</b>	<b>2,310</b>	<b>19.6%</b>

JUNE	2005	2006	+/-	% Change
Beaver Creek	1,726	1,967	241	14.0%
Fraser	19,680	24,450	4,770	24.2%
Little Gold	141	193	52	36.9%
Pleasant	35	94	59	168.6%
<b>Total</b>	<b>21,582</b>	<b>26,704</b>	<b>5,122</b>	<b>23.7%</b>

JULY	2005	2006	+/-	% Change
Beaver Creek	2,282	2,153	-129	-5.7%
Fraser	21,362	22,945	1,583	7.4%
Little Gold	306	352	46	15.0%
Pleasant	241	118	-123	-51.0%
<b>Total</b>	<b>24,191</b>	<b>25,568</b>	<b>1,377</b>	<b>5.7%</b>

AUGUST	2005	2006	+/-	% Change
Beaver Creek	2,248	2,106	-142	-6.3%
Fraser	22,468	26,561	4,093	18.2%
Little Gold	465	0	-465	-100.0%
Pleasant	88	71	-17	-19.3%
<b>Total</b>	<b>25,269</b>	<b>28,738</b>	<b>3,469</b>	<b>13.7%</b>

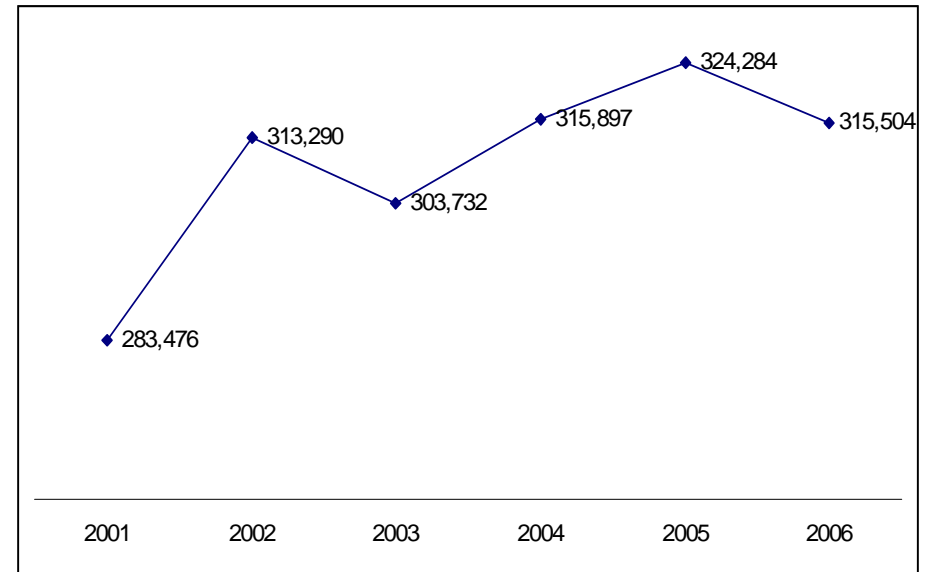
SEPT	2005	2006	+/-	% Change
Beaver Creek	475	459	-16	-3.4%
Fraser	11,964	13,058	1,094	9.1%
Little Gold	72	0	-72	-100.0%
Pleasant	57	44	-13	-22.8%
<b>Total</b>	<b>12,568</b>	<b>13,561</b>	<b>993</b>	<b>7.9%</b>

TOTAL	2005	2006	+/-	% Change
Beaver Creek	7,162	7,001	-161	-2.2%
Fraser	86,708	100,701	13,993	16.1%
Little Gold	1,083	620	-463	-42.8%
Pleasant	440	342	-98	-22.3%
<b>Total</b>	<b>95,393</b>	<b>108,664</b>	<b>13,271</b>	<b>13.9%</b>

SOURCE: CANADA BORDER SERVICES AGENCY AND YUKON BUREAU OF STATISTICS

TOTALS INCLUDE YUKON RESIDENTS.

**YUKON BORDER CROSSING STATISTICS -TRENDS**



SOURCE: CANADA BORDER SERVICES AGENCY AND YUKON BUREAU OF STATISTICS.

PASSENGER TOTALS DO NOT INCLUDE TRAIN VISITORS, THOSE IN COMMERCIAL VEHICLES, VISITORS ARRIVING BY AIR, OR MARINE ARRIVALS (DAWSON CITY).

FIGURES INCLUDE YUKON RESIDENTS.

**ANNUAL YUKON BORDER CROSSING STATISTICS - 2005 / 2006**

2005	JAN	FEB	MAR	APR	MAY	JUN	JUL	AUG	SEPT	OCT	NOV	DEC	TOTALS
Private Vehicle	3,356	3,789	7,387	8,241	18,131	36,908	57,968	50,063	26,131	9,051	3,582	3,741	228,348
Motorcoach	35	44	74	124	11,783	21,582	24,191	25,269	12,568	103	117	46	95,936
<b>TOTALS</b>	<b>3,391</b>	<b>3,833</b>	<b>7,461</b>	<b>8,365</b>	<b>29,914</b>	<b>58,490</b>	<b>82,159</b>	<b>75,332</b>	<b>38,699</b>	<b>9,154</b>	<b>3,699</b>	<b>3,787</b>	<b>324,284</b>
US	2,659	3,065	4,812	5,628	20,325	41,275	58,251	54,631	28,071	6,327	2,710	2,901	230,655
Yukon	617	606	2,285	2,321	4,668	4,647	6,340	5,754	3,387	2,194	724	755	34,298
Canada	46	115	228	261	1,809	6,718	10,472	7,537	2,638	480	244	114	30,662
Others	69	47	136	155	3,112	5,850	7,096	7,410	4,603	153	21	17	28,669

2006	JAN	FEB	MAR	APR	MAY	JUN	JUL	AUG	SEPT	OCT	NOV	DEC	TOTALS
Private Vehicle	3,500	3,408	5,724	7,349	18,205	34,335	49,935	43,131	23,269	9,893	3,993	3,292	206,034
Motorcoach	38	151	137	243	14,093	26,704	25,568	28,738	13,561	52	105	80	109,470
<b>TOTALS</b>	<b>3,538</b>	<b>3,559</b>	<b>5,861</b>	<b>7,592</b>	<b>32,298</b>	<b>61,039</b>	<b>75,503</b>	<b>71,869</b>	<b>36,830</b>	<b>9,945</b>	<b>4,098</b>	<b>3,372</b>	<b>315,504</b>
US	2,676	2,597	4,282	4,825	21,885	44,052	55,050	53,400	26,738	6,946	3,206	2,622	228,279
Yukon	785	739	1,342	2,300	4,933	4,997	6,194	4,899	3,181	2,424	774	620	33,188
Canada	50	168	155	348	1,954	6,217	8,396	6,536	2,599	429	77	101	27,030
Others	27	55	82	119	3,526	5,773	5,863	7,034	4,312	146	41	29	27,007

+ / - % CHANGE	JAN	FEB	MAR	APR	MAY	JUN	JUL	AUG	SEPT	OCT	NOV	DEC	TOTALS
Private Vehicle	144	-381	-1,663	-892	74	-2,573	-8,033	-6,932	-2,862	842	411	-449	-22,314
<b>% CHANGE</b>	<b>4.3%</b>	<b>-10.1%</b>	<b>-22.5%</b>	<b>-10.8%</b>	<b>0.4%</b>	<b>-7.0%</b>	<b>-13.9%</b>	<b>-13.8%</b>	<b>-11.0%</b>	<b>9.3%</b>	<b>11.5%</b>	<b>-12.0%</b>	<b>-9.8%</b>
Motorcoach	3	107	63	119	2,310	5,122	1,377	3,469	993	-51	-12	34	13,534
<b>% CHANGE</b>	<b>8.6%</b>	<b>243.2%</b>	<b>85.1%</b>	<b>96.0%</b>	<b>19.6%</b>	<b>23.7%</b>	<b>5.7%</b>	<b>13.7%</b>	<b>7.9%</b>	<b>-49.5%</b>	<b>-10.3%</b>	<b>73.9%</b>	<b>14.1%</b>
<b>TOTALS</b>	<b>147</b>	<b>-274</b>	<b>-1,600</b>	<b>-773</b>	<b>2,384</b>	<b>2,549</b>	<b>-6,656</b>	<b>-3,463</b>	<b>-1,869</b>	<b>791</b>	<b>399</b>	<b>-415</b>	<b>-8,780</b>
<b>% CHANGE</b>	<b>4.3%</b>	<b>-7.1%</b>	<b>-21.4%</b>	<b>-9.2%</b>	<b>8.0%</b>	<b>4.4%</b>	<b>-8.1%</b>	<b>-4.6%</b>	<b>-4.8%</b>	<b>8.6%</b>	<b>10.8%</b>	<b>-11.0%</b>	<b>-2.7%</b>
US	17	-468	-530	-803	1,560	2,777	-3,201	-1,231	-1,333	619	496	-279	-2,376
<b>% CHANGE</b>	<b>0.6%</b>	<b>-15.3%</b>	<b>-11.0%</b>	<b>-14.3%</b>	<b>7.7%</b>	<b>6.7%</b>	<b>-5.5%</b>	<b>-2.3%</b>	<b>-4.7%</b>	<b>9.8%</b>	<b>18.3%</b>	<b>-9.6%</b>	<b>-1.0%</b>
Yukoners	168	133	-943	-21	265	350	-146	-855	-206	230	50	-135	-1,110
<b>% CHANGE</b>	<b>27.2%</b>	<b>21.9%</b>	<b>-41.3%</b>	<b>-0.9%</b>	<b>5.7%</b>	<b>7.5%</b>	<b>-2.3%</b>	<b>-14.9%</b>	<b>-6.1%</b>	<b>10.5%</b>	<b>6.9%</b>	<b>-17.9%</b>	<b>-3.2%</b>
Canada	4	53	-73	87	145	-501	-2,076	-1,001	-39	-51	-167	-13	-3,632
<b>% CHANGE</b>	<b>8.7%</b>	<b>46.1%</b>	<b>-32.0%</b>	<b>33.3%</b>	<b>8.0%</b>	<b>-7.5%</b>	<b>-19.8%</b>	<b>-13.3%</b>	<b>-1.5%</b>	<b>-10.6%</b>	<b>-68.4%</b>	<b>-11.4%</b>	<b>-11.8%</b>
Others	-42	8	-54	-36	414	-77	-1,233	-376	-291	-7	20	12	-1,662
<b>% CHANGE</b>	<b>-60.9%</b>	<b>17.0%</b>	<b>-39.7%</b>	<b>-23.2%</b>	<b>13.3%</b>	<b>-1.3%</b>	<b>-17.4%</b>	<b>-5.1%</b>	<b>-6.3%</b>	<b>-4.6%</b>	<b>95.2%</b>	<b>70.6%</b>	<b>-5.8%</b>

SOURCE: CANADA BORDER SERVICES AGENCY AND YUKON BUREAU OF STATISTICS.

PASSENGER TOTALS DO NOT INCLUDE TRAIN VISITORS, THOSE IN COMMERCIAL VEHICLES, VISITORS ARRIVING BY AIR, OR MARINE ARRIVALS (DAWSON CITY).

**VISITOR INFORMATION CENTRE (VIC) STATISTICS**

**2006 Visitor Information Centre Statistics**

<b>VIC STATISTICS BY COUNTRY OF ORIGIN - CANADA</b>				
VIC	2005	2006	+ / -	% Change
BEAVER CREEK	2,200	2011	-189	-9%
CARCROSS	17,008	15304	-1,704	-10%
DAWSON CITY	8,935	8704	-231	-3%
HAINES JUNCTION	3,925	3127	-798	-20%
WATSON LAKE	10,253	8894	-1,359	-13%
WHITEHORSE	23,230	23356	126	1%
<b>TOTALS</b>	<b>65,551</b>	<b>61,396</b>	<b>-4,155</b>	<b>-6%</b>

<b>VIC STATISTICS BY COUNTRY OF ORIGIN - U.S.A.</b>				
VIC	2005	2006	+ / -	% Change
BEAVER CREEK	6,512	4949	-1,563	-24%
CARCROSS	50,701	52935	2,234	4%
DAWSON CITY	15,023	10776	-4,247	-28%
HAINES JUNCTION	15,190	13804	-1,386	-9%
WATSON LAKE	14,865	12338	-2,527	-17%
WHITEHORSE	25,714	26368	654	3%
<b>TOTALS</b>	<b>128,005</b>	<b>121,170</b>	<b>-6,835</b>	<b>-5%</b>

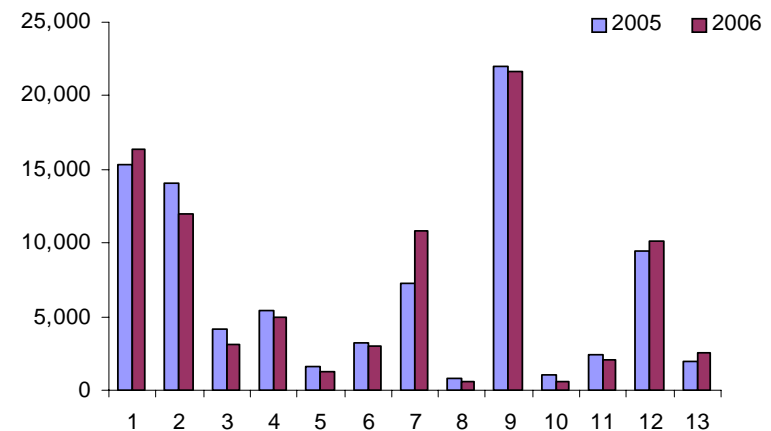
<b>VIC STATISTICS BY COUNTRY OF ORIGIN - OTHER</b>				
VIC	2005	2006	+ / -	% Change
BEAVER CREEK	4,271	3863	-408	-10%
CARCROSS	11,638	12676	1,038	9%
DAWSON CITY	5,999	5414	-585	-10%
HAINES JUNCTION	3,104	2355	-749	-24%
WATSON LAKE	3,842	5106	1,264	33%
WHITEHORSE	13,342	11644	-1,698	-13%
<b>TOTALS</b>	<b>42,196</b>	<b>41,058</b>	<b>-1,138</b>	<b>-3%</b>

<b>VIC STATISTICS - ALL VISITORS</b>				
VIC	2005	2006	+ / -	% Change
BEAVER CREEK	12,983	10,823	-2,160	-17%
CARCROSS	79,347	80,915	1,568	2%
DAWSON CITY	29,957	24,894	-5,063	-17%
HAINES JUNCTION	22,219	19,286	-2,933	-13%
WATSON LAKE	28,960	26,338	-2,622	-9%
WHITEHORSE	62,286	61,368	-918	-1%
<b>TOTALS</b>	<b>235,752</b>	<b>223,624</b>	<b>-12,128</b>	<b>-5%</b>

**YUKON MUSEUM VISITOR STATISTICS**

	MUSEUM	2005-06	2006-07	+/-
1	MacBride Museum	15300	16333	1033
2	Dawson City Museum	14054	12000	-2054
3	Old Log Church	4128	3086	-1042
4	Kluane Museum/ Natural History	5444	5000	-444
5	Keno City Mining Museum	1628	1322	-306
6	George Johnston Museum	3250	2999	-251
7	Yukon Transportation Museum	7244	10786	3542
8	YHMA Walking Tour	809	539	-270
9	Beringia Centre	22016	21716	-300
10	Binet House	1000	577	-423
11	Campbell Region Interpretive Centre.	2403	2077	-326
12	Northern Lights Space & Sc. Centre	9481	10087	606
13	Miles Canyon Railway	2000	2535	535
	<b>TOTAL</b>	<b>88757</b>	<b>84057</b>	<b>-4700</b>

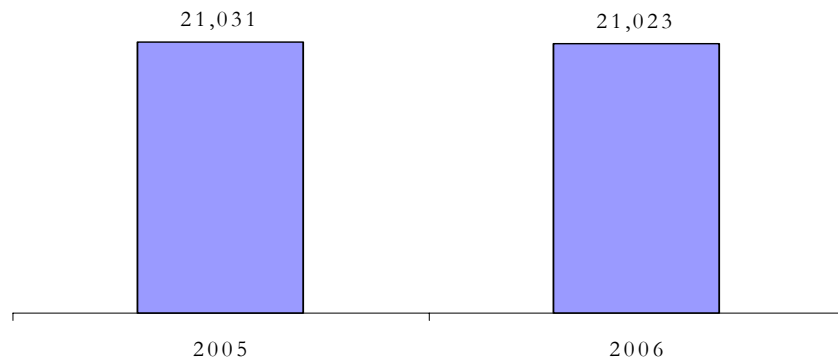
**YUKON MUSEUM VISITOR STATISTICS** (April 1st to March 31st)



**MUSEUMS**

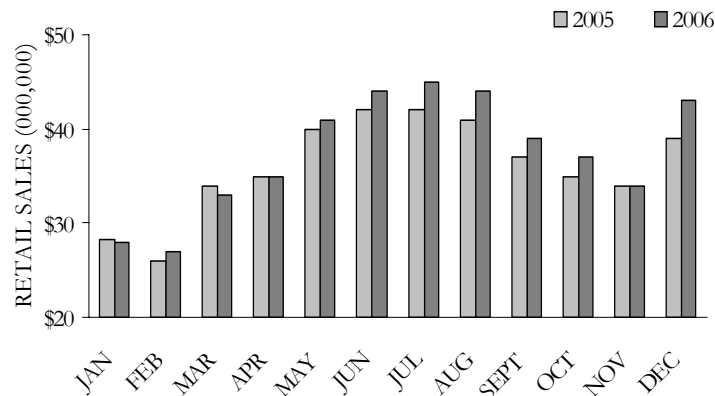
VISITOR INFORMATION CENTRE STATISTICS ARE COMPILED FROM VOLUNTARY VISITOR SIGN-IN SHEETS AND ARE AN INDICATION OF INFORMATION CENTRE VISITATION TRENDS ONLY. THEY ARE NOT INTENDED TO BE AN ACCURATE RECORD OF ALL VISITATION TO THE YUKON. THE WHITEHORSE VIC IS OPEN YEAR ROUND; VIC STATISTICS ARE ONLY REPORTED FOR THE PERIOD FROM MAY 1ST TO SEPTEMBER 30TH.

### BERINGIA INTERPRETIVE CENTRE STATISTICS



THE NUMBER OF VISITORS TO THE BERINGIA INTERPRETIVE CENTRE DECREASED FROM 21,031 IN 2005 TO 21,023 (JAN. TO DEC.) IN 2006, A DECREASE OF 8 VISITORS.

### YUKON RETAIL SALES



SOURCE: YUKON BUREAU OF STATISTICS

RETAIL SALES IN THE YUKON INCREASED FROM \$433.2 MILLION (JAN. TO DEC.) IN 2005 TO \$450.0 MILLION (JAN. TO DEC.) IN 2006, AN INCREASE OF 3.8% OR \$16.8 MILLION.

### BORDER CROSSING STATISTICS-YUKON RIVER-DAWSON

2005	MAY	JUN	JUL	AUG	SEP	TOTALS
Boat Trips	7	28	28	25	11	99
<b>TOTAL PASSENGERS</b>	<b>500</b>	<b>2,269</b>	<b>2,082</b>	<b>2,024</b>	<b>485</b>	<b>7,360</b>
US Citizens	255	1,865	1,856	1,615	438	6,029
Canadian Citizens	43	212	114	184	26	579
Others	202	192	112	225	21	752

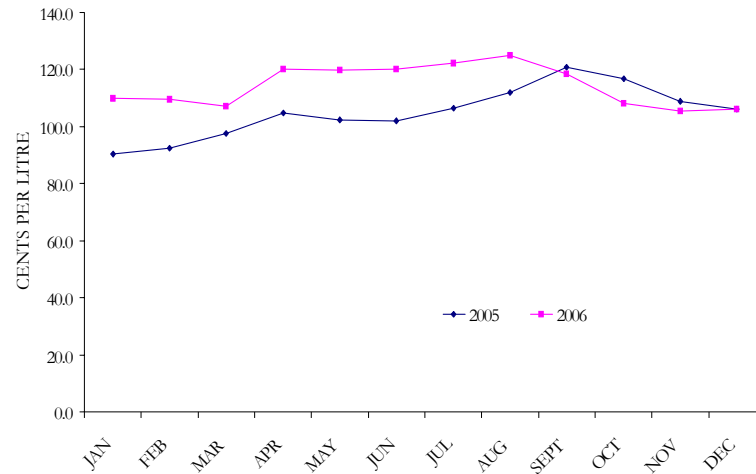
2006	MAY	JUN	JUL	AUG	SEP	TOTALS
Boat Trips	7	30	32	31	8	108
<b>TOTAL PASSENGERS</b>	<b>556</b>	<b>2,597</b>	<b>2,374</b>	<b>2,460</b>	<b>315</b>	<b>8,302</b>
US Citizens	348	2,183	1,970	2,028	258	6,787
Canadian Citizens	54	205	254	249	46	808
Others	154	209	150	183	11	707

+/- % CHANGE	MAY	JUN	JUL	AUG	SEP	TOTALS
Boat Trips	0	2	4	6	-3	9
<b>% CHANGE</b>	<b>0.0%</b>	<b>7.1%</b>	<b>14.3%</b>	<b>24.0%</b>	<b>-27.3%</b>	<b>9.1%</b>
<b>TOTAL PASSENGERS</b>	<b>56</b>	<b>328</b>	<b>292</b>	<b>436</b>	<b>-170</b>	<b>942</b>
<b>% CHANGE</b>	<b>11.2%</b>	<b>14.5%</b>	<b>14.0%</b>	<b>21.5%</b>	<b>-35.1%</b>	<b>12.8%</b>
US Citizens	93	318	114	413	-180	758
<b>% CHANGE</b>	<b>36.5%</b>	<b>17.1%</b>	<b>6.1%</b>	<b>25.6%</b>	<b>-41.1%</b>	<b>12.6%</b>
Canadian Citizens	11	-7	140	65	20	229
<b>% CHANGE</b>	<b>25.6%</b>	<b>-3.3%</b>	<b>122.8%</b>	<b>35.3%</b>	<b>76.9%</b>	<b>39.6%</b>
Others	-48	17	38	-42	-10	-45
<b>% CHANGE</b>	<b>-23.8%</b>	<b>8.9%</b>	<b>33.9%</b>	<b>-18.7%</b>	<b>-47.6%</b>	<b>-6.0%</b>

SOURCE: CANADA BORDER SERVICES AGENCY AND YUKON BUREAU OF STATISTICS

MARINE ARRIVALS IN DAWSON CITY INCLUDE VISITORS ARRIVING ON THE YUKON QUEEN FROM EAGLE, ALASKA.

**AVERAGE YUKON AUTO FUEL PRICES (GASOLINE)**

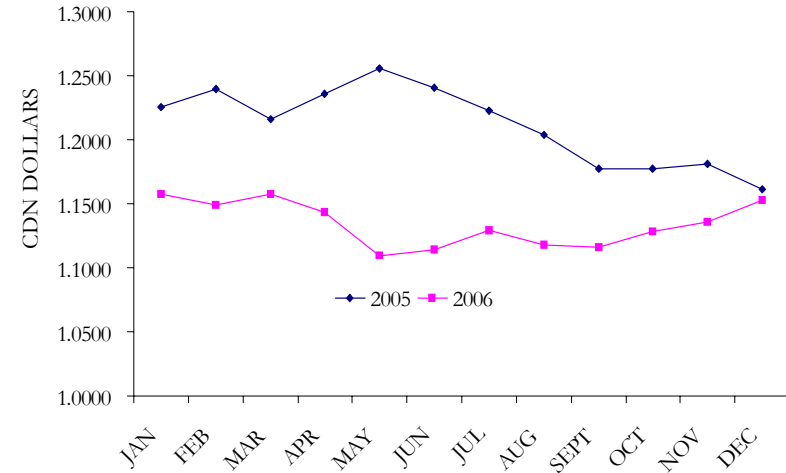


AVERAGE AUTO FUEL PRICES			
	2005	2006	AVERAGE
MONTH	AVERAGE	AVERAGE	CHANGE
JAN	90.5	110	19.5
FEB	92.5	109.7	17.2
MAR	97.6	107.1	9.5
APR	104.8	120.2	15.4
MAY	102.4	119.8	17.4
JUN	102.1	120	17.9
JUL	106.3	122.1	15.8
AUG	112.1	125.1	13.0
SEPT	120.7	118.5	-2.2
OCT	116.8	108.3	-8.5
NOV	108.8	105.4	-3.4
DEC	106.1	106.1	0.0

SOURCE: YUKON BUREAU OF STATISTICS

AUTO FUEL PRICES ARE THE AVERAGE PRICE PER LITRE OF REGULAR SELF-SERVE FUEL IN WHITEHORSE.

**AVERAGE U.S. EXCHANGE RATES**



AVERAGE U.S. EXCHANGE RATES			
	2005	2006	CHANGE
MONTH			
JAN	1.2253	1.1572	-0.0681
FEB	1.2397	1.1488	-0.0909
MAR	1.2161	1.1574	-0.0587
APR	1.2360	1.1437	-0.0923
MAY	1.2555	1.1094	-0.1461
JUN	1.2402	1.1138	-0.1264
JUL	1.2227	1.1292	-0.0935
AUG	1.2040	1.1182	-0.0858
SEPT	1.1776	1.1161	-0.0615
OCT	1.1776	1.1286	-0.0490
NOV	1.1811	1.1361	-0.0450
DEC	1.1610	1.1530	-0.0080

SOURCE: BANK OF CANADA

EXCHANGE RATES ARE THE AVERAGE FOR EACH MONTH.

# YUKON VISITOR STATISTICS

## 2006 YEAR-END REPORT

### YUKON BORDER CROSSING STATISTICS - SUMMER

2005	MAY	JUN	JUL	AUG	SEP	TOTALS
Private Vehicle	18,131	36,908	57,968	50,063	26,131	189,201
Motorcoach	11,783	21,582	24,191	25,269	12,568	95,393
<b>TOTALS</b>	<b>29,914</b>	<b>58,490</b>	<b>82,159</b>	<b>75,332</b>	<b>38,699</b>	<b>284,594</b>
US Citizens	20,325	41,275	58,251	54,631	28,071	202,553
Yukon Residents	4,668	4,647	6,340	5,754	3,387	24,796
Canadian Citizens	1,809	6,718	10,472	7,537	2,638	29,174
Others	3,112	5,850	7,096	7,410	4,603	28,071

2006	MAY	JUN	JUL	AUG	SEP	TOTALS
Private Vehicle	18,205	34,335	49,935	43,131	23,269	168,875
Motorcoach	14,093	26,704	25,568	28,738	13,561	108,664
<b>TOTALS</b>	<b>32,298</b>	<b>61,039</b>	<b>75,503</b>	<b>71,869</b>	<b>36,830</b>	<b>277,539</b>
US Citizens	21,885	44,052	55,050	53,400	26,738	201,125
Yukon Residents	4,933	4,997	6,194	4,899	3,181	24,204
Canadian Citizens	1,954	6,217	8,396	6,536	2,599	25,702
Others	3,526	5,773	5,863	7,034	4,312	26,508

+/- % CHANGE	MAY	JUN	JUL	AUG	SEP	TOTALS
Private Vehicle	74	-2,573	-8,033	-6,932	-2,862	-20,326
<b>% CHANGE</b>	<b>0.4%</b>	<b>-7.0%</b>	<b>-13.9%</b>	<b>-13.8%</b>	<b>-11.0%</b>	<b>-10.7%</b>
Motorcoach	2,310	5,122	1,377	3,469	993	13,271
<b>% CHANGE</b>	<b>19.6%</b>	<b>23.7%</b>	<b>5.7%</b>	<b>13.7%</b>	<b>7.9%</b>	<b>13.9%</b>
<b>TOTALS</b>	<b>2,384</b>	<b>2,549</b>	<b>-6,656</b>	<b>-3,463</b>	<b>-1,869</b>	<b>-7,055</b>
<b>% CHANGE</b>	<b>8.0%</b>	<b>4.4%</b>	<b>-8.1%</b>	<b>-4.6%</b>	<b>-4.8%</b>	<b>-2.5%</b>
US Citizens	1,560	2,777	-3,201	-1,231	-1,333	-1,428
<b>% CHANGE</b>	<b>7.7%</b>	<b>6.7%</b>	<b>-5.5%</b>	<b>-2.3%</b>	<b>-4.7%</b>	<b>-0.7%</b>
Yukon Residents	265	350	-146	-855	-206	-592
<b>% CHANGE</b>	<b>5.7%</b>	<b>7.5%</b>	<b>-2.3%</b>	<b>-14.9%</b>	<b>-6.1%</b>	<b>-2.4%</b>
Canadian Citizens	145	-501	-2,076	-1,001	-39	-3,472
<b>% CHANGE</b>	<b>8.0%</b>	<b>-7.5%</b>	<b>-19.8%</b>	<b>-13.3%</b>	<b>-1.5%</b>	<b>-11.9%</b>
Others	414	-77	-1,233	-376	-291	-1,563
<b>% CHANGE</b>	<b>13.3%</b>	<b>-1.3%</b>	<b>-17.4%</b>	<b>-5.1%</b>	<b>-6.3%</b>	<b>-5.6%</b>

SOURCE: CANADA BORDER SERVICES AGENCY AND YUKON BUREAU OF STATISTICS

PASSENGER TOTALS DO NOT INCLUDE TRAIN VISITORS, THOSE IN COMMERCIAL VEHICLES, VISITORS ARRIVING BY AIR, OR MARINE ARRIVALS (DAWSON CITY).