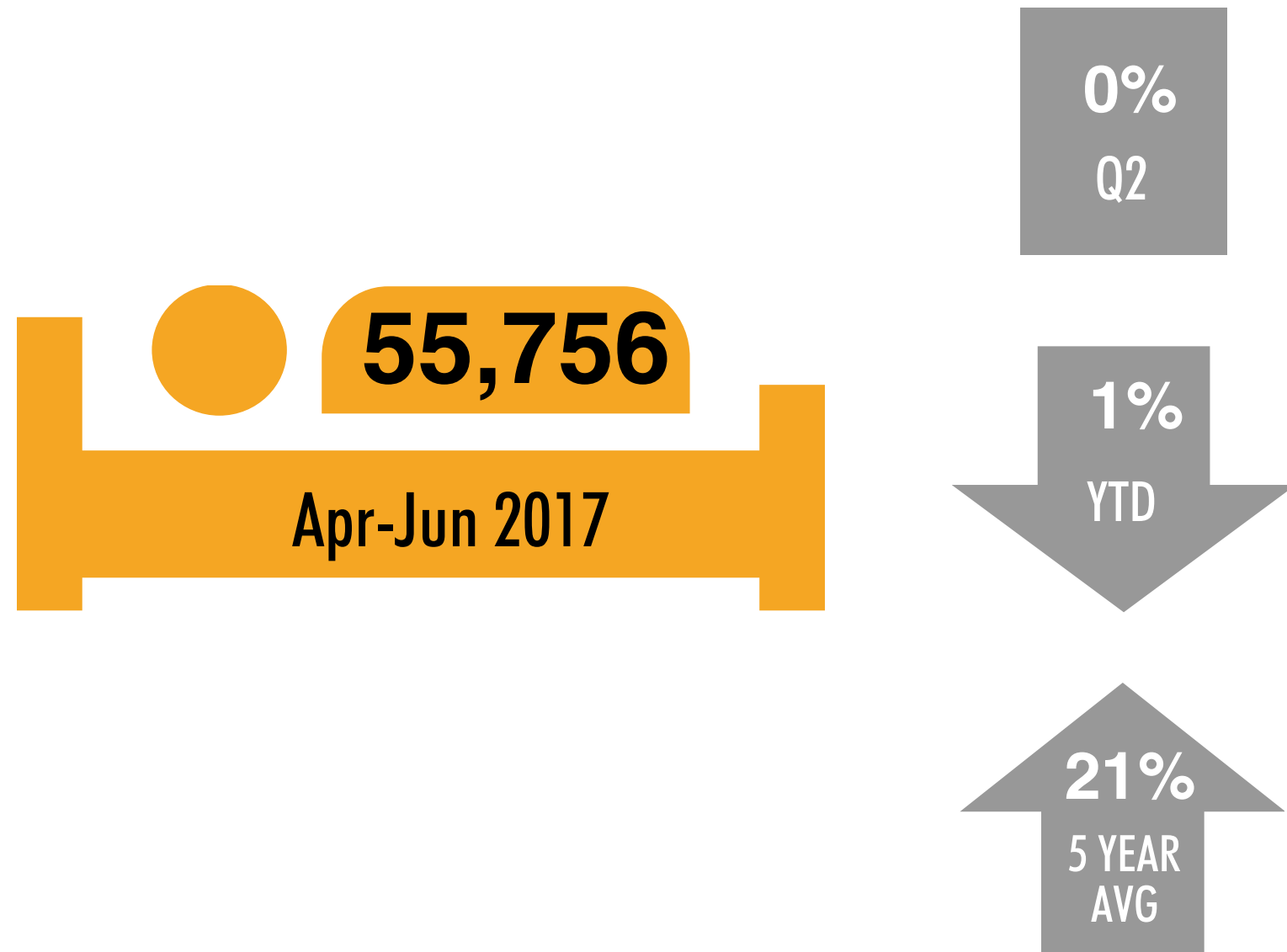
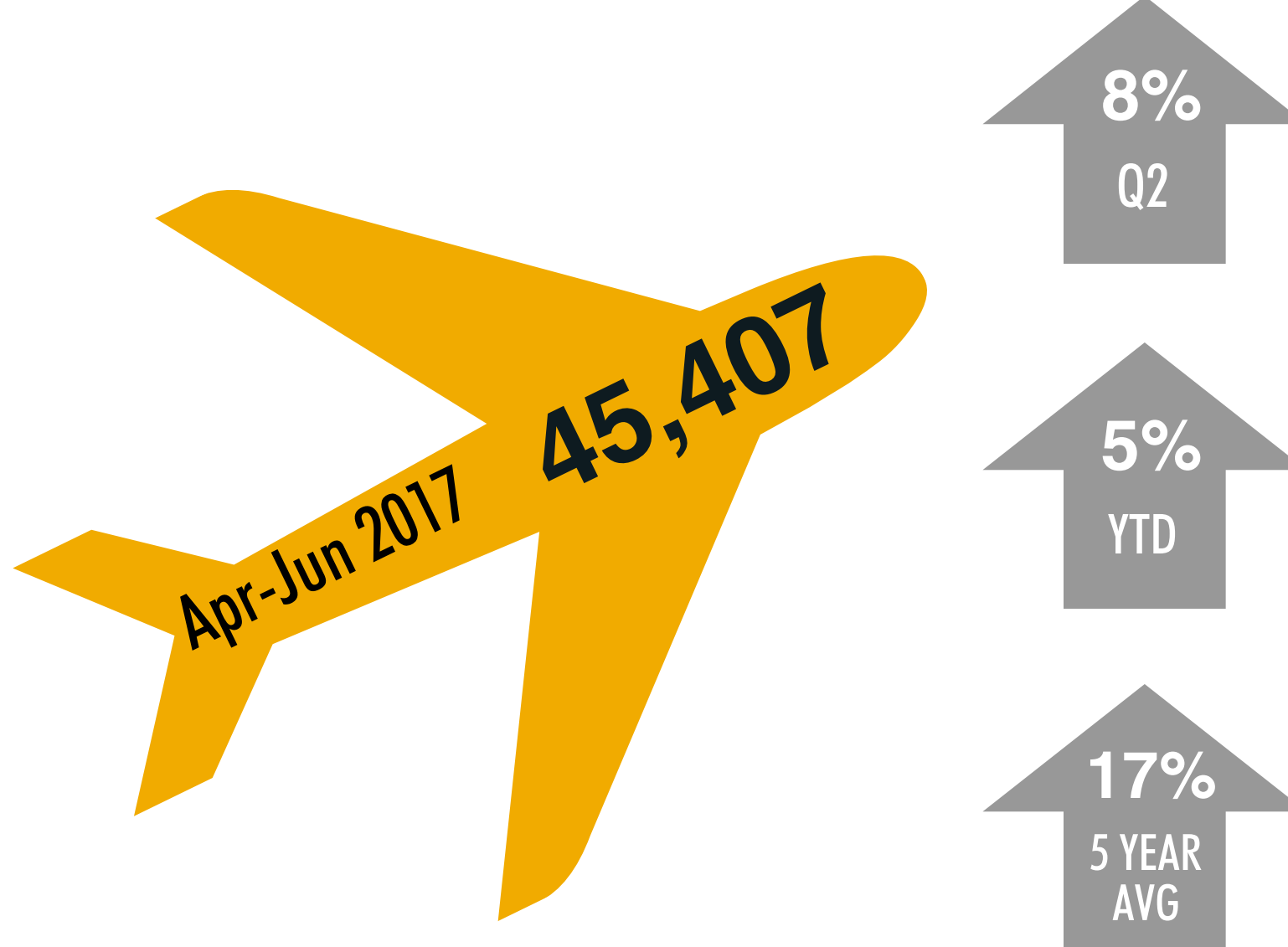


Q2 HIGHLIGHTS: APR - JUN 2017

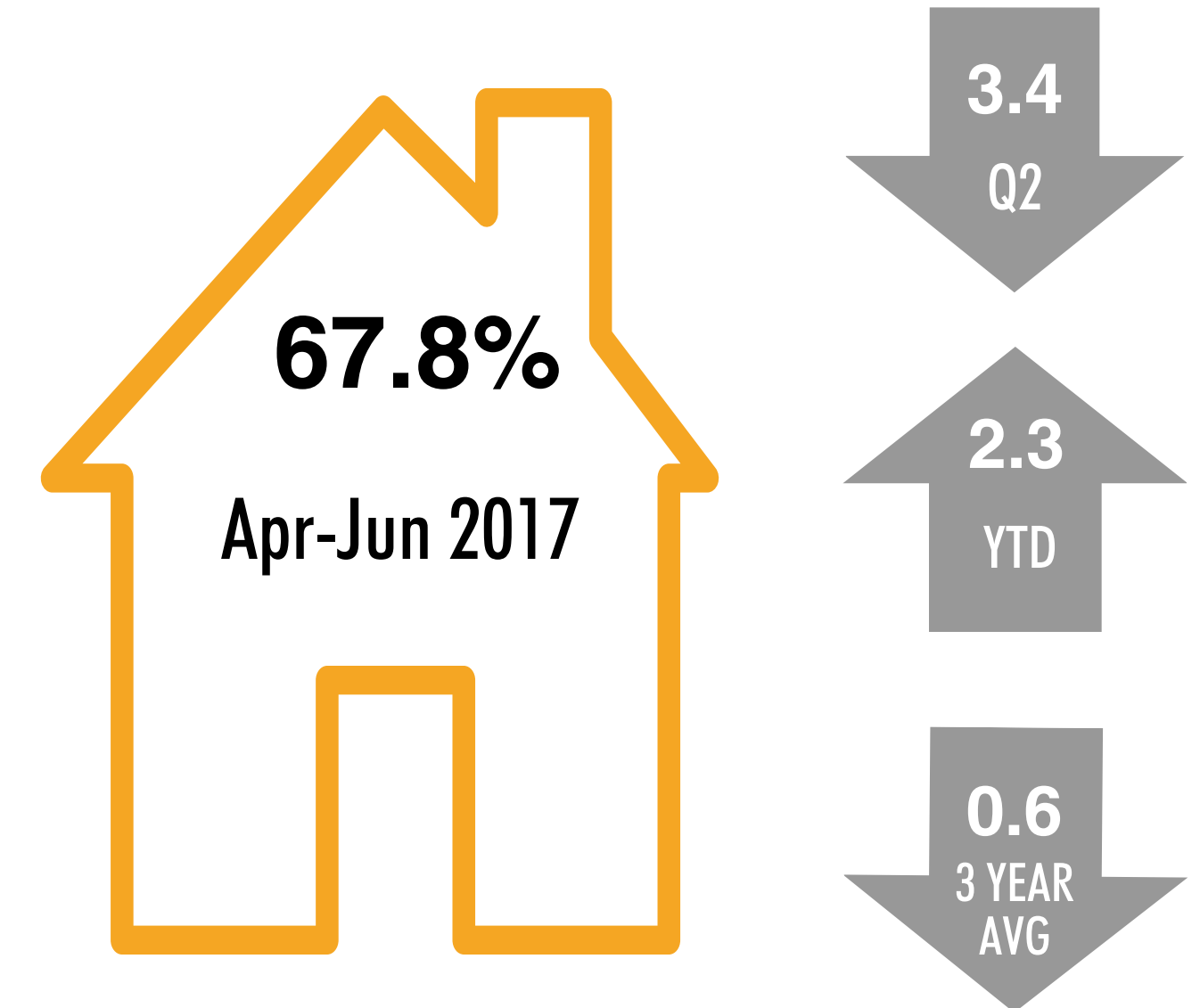
International Overnight Visitation (1+ Nights)



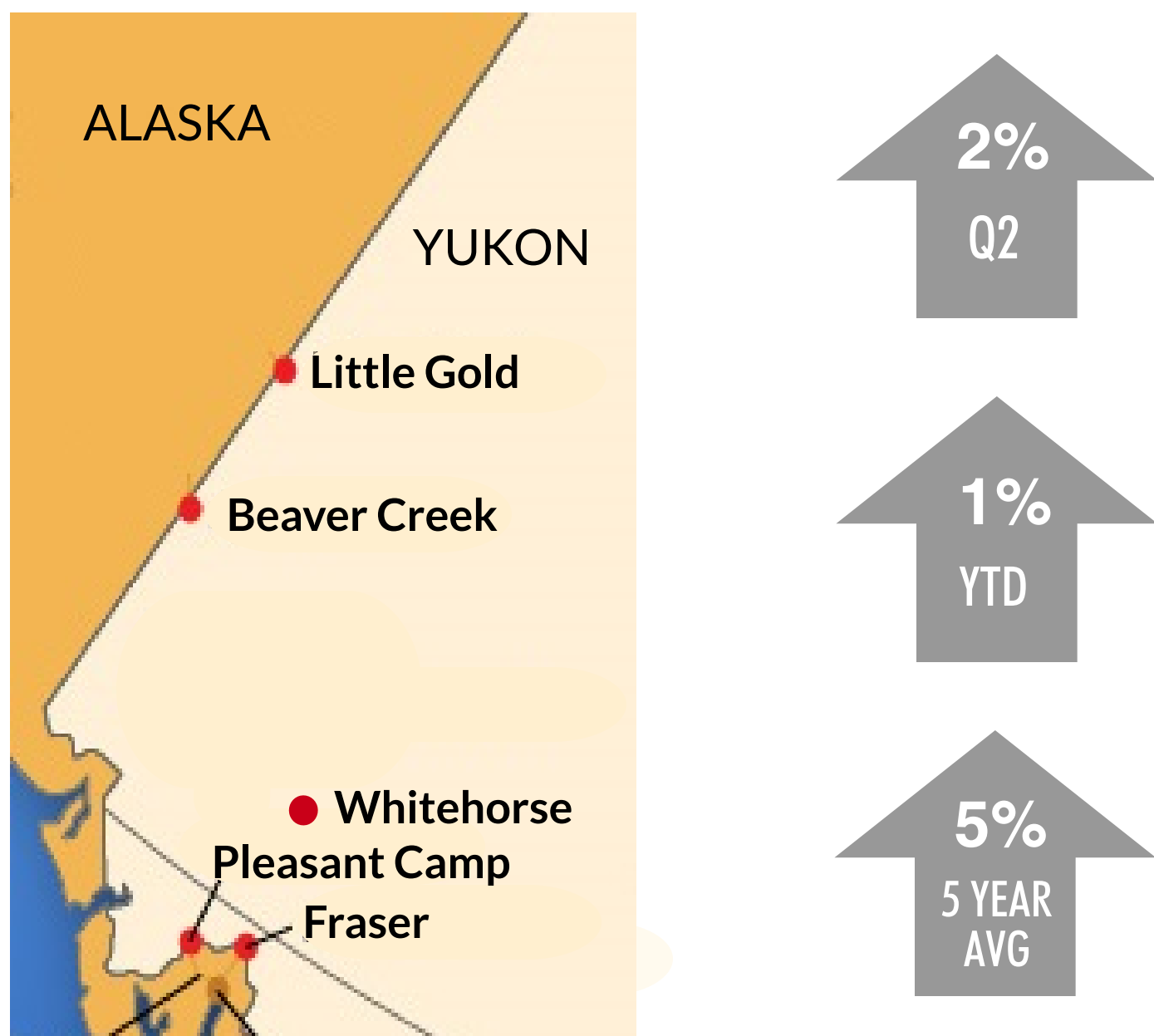
Air Arrivals at Erik Nielson Whitehorse International Airport



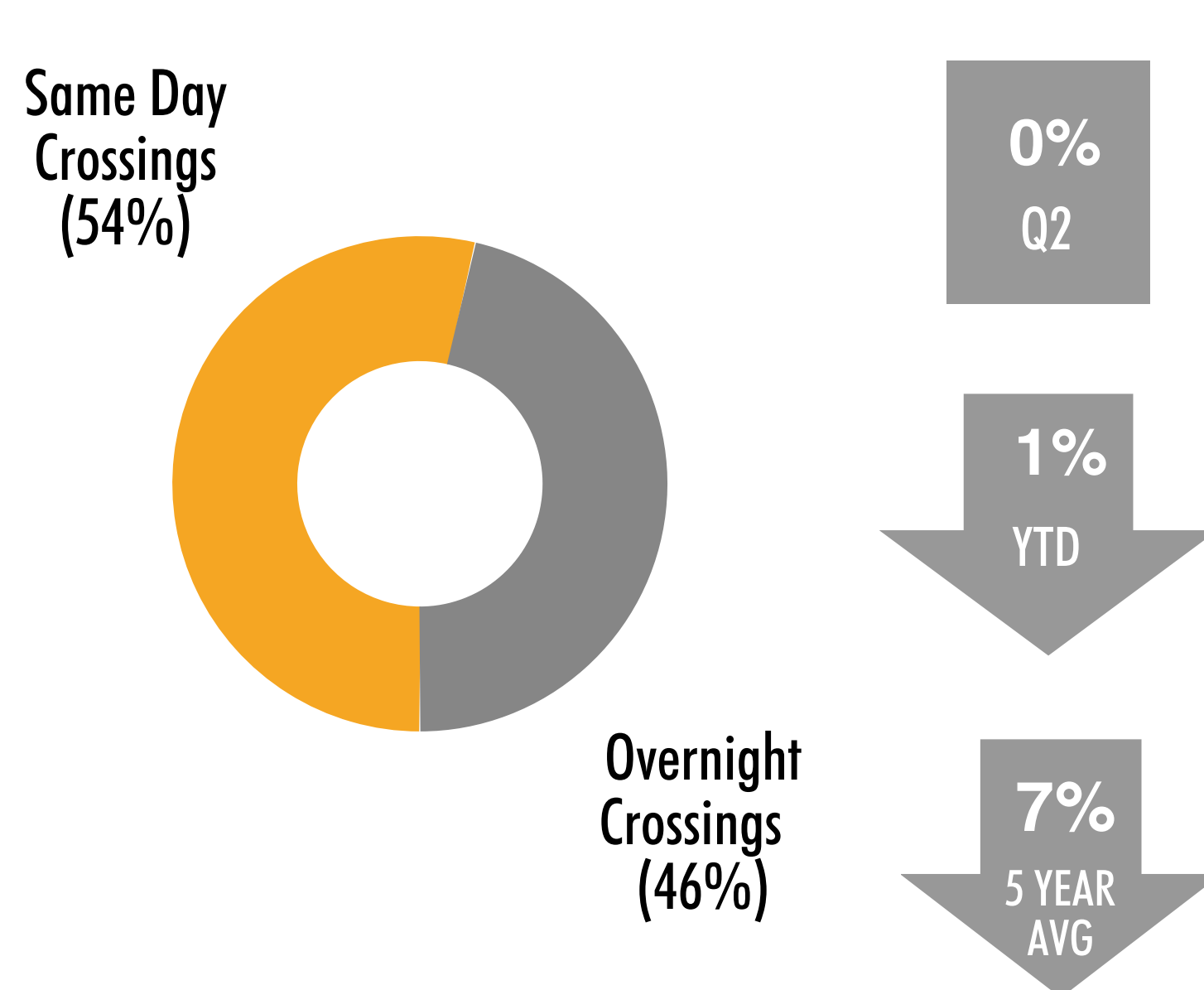
Occupancy at Select Fixed Roof Accommodations



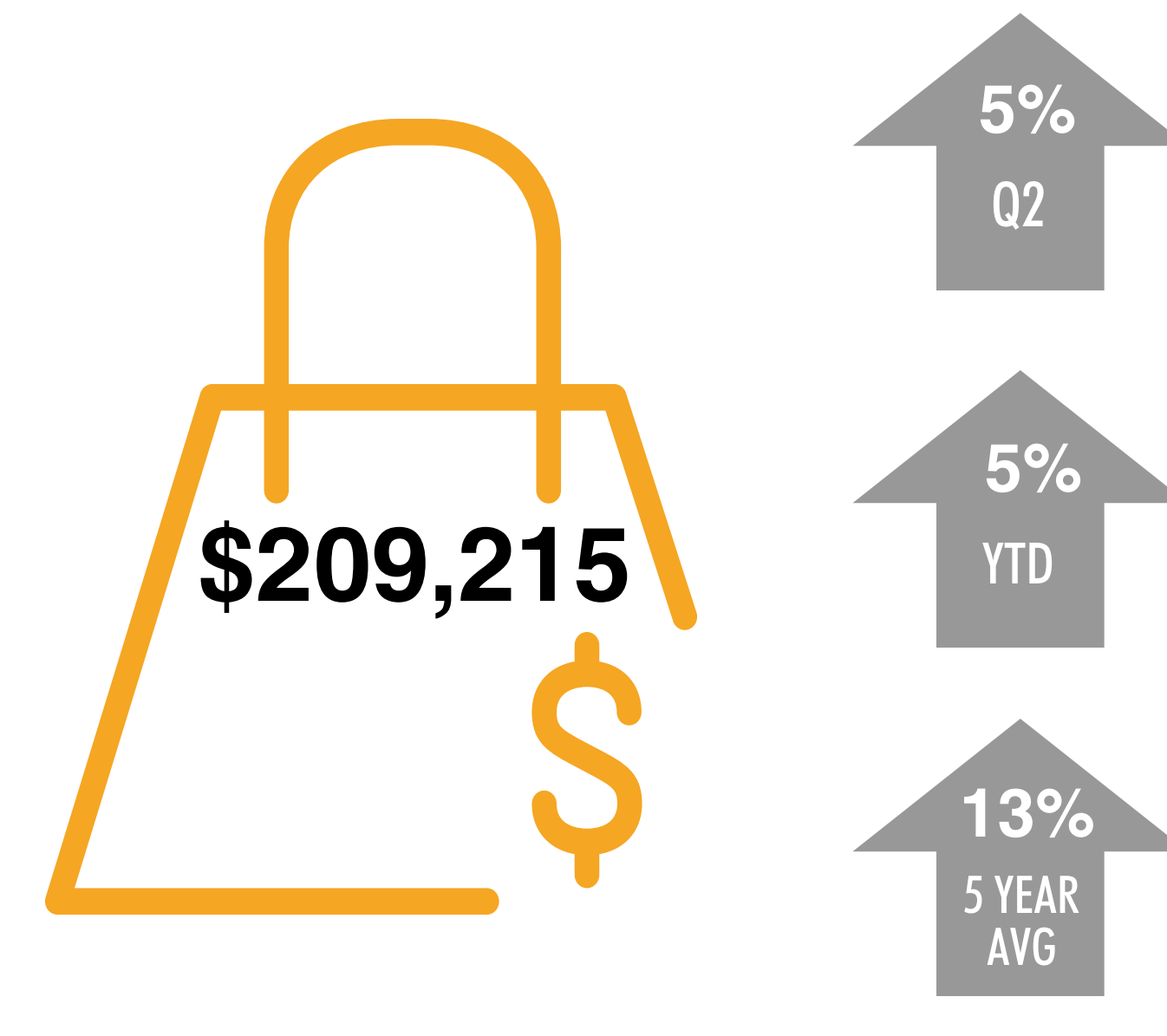
International Border Crossings (Into Yukon)



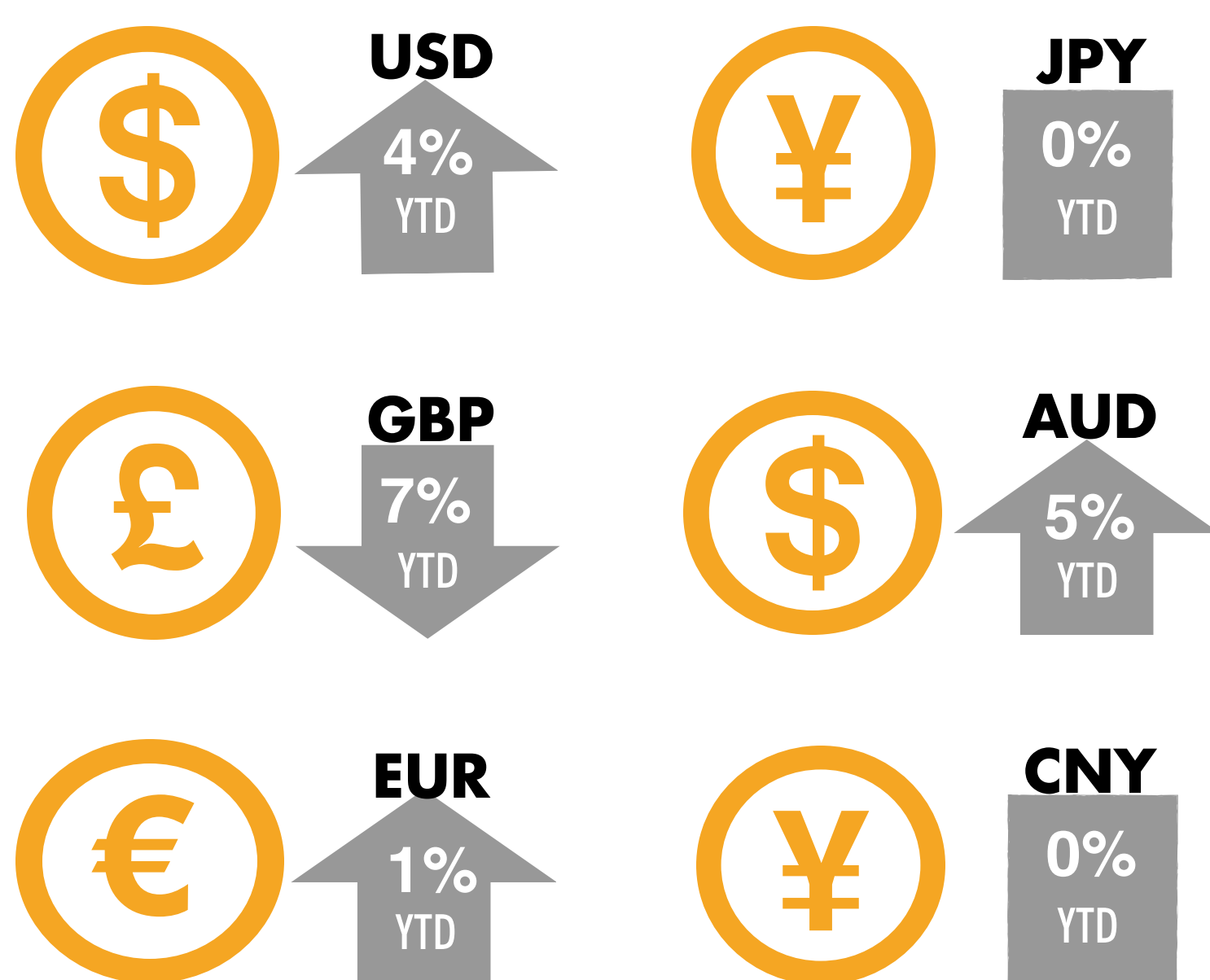
Same Day International Border Crossings (Into Yukon)



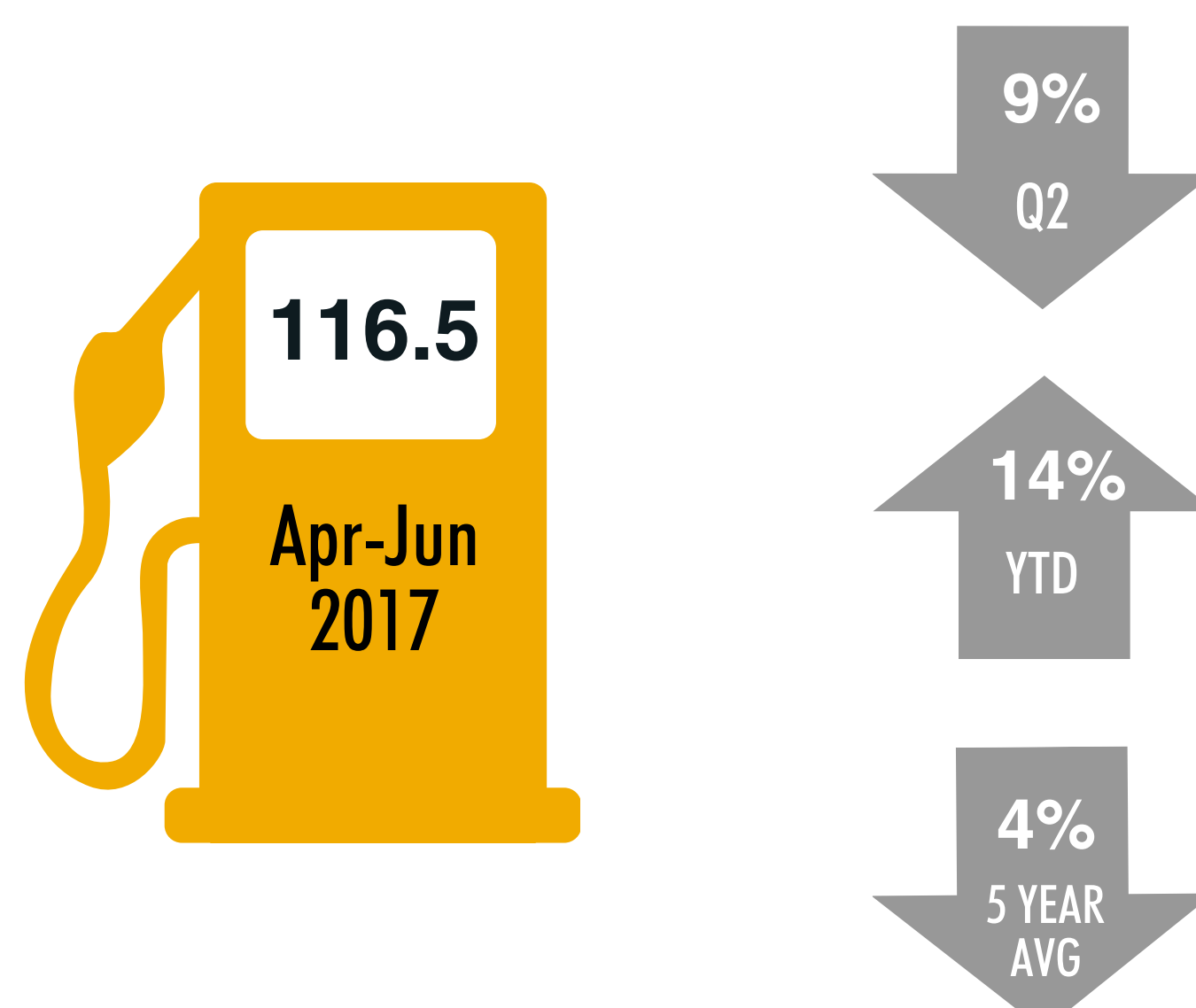
Retail Sales (Total \$000)



Exchange Rates (For CAD)



Average cost per litre of regular self-serve gasoline in Whitehorse



Consumer Confidence in Canada



Source: Government of Yukon Socio-Economic Web Portal, Motor Fuel Prices (Whitehorse)

Source: Conference Board of Canada, Index of Consumer Confidence

YEAR-TO-DATE VS. 5 YEAR AVERAGE

Overnight Visitation (1+ Nights)

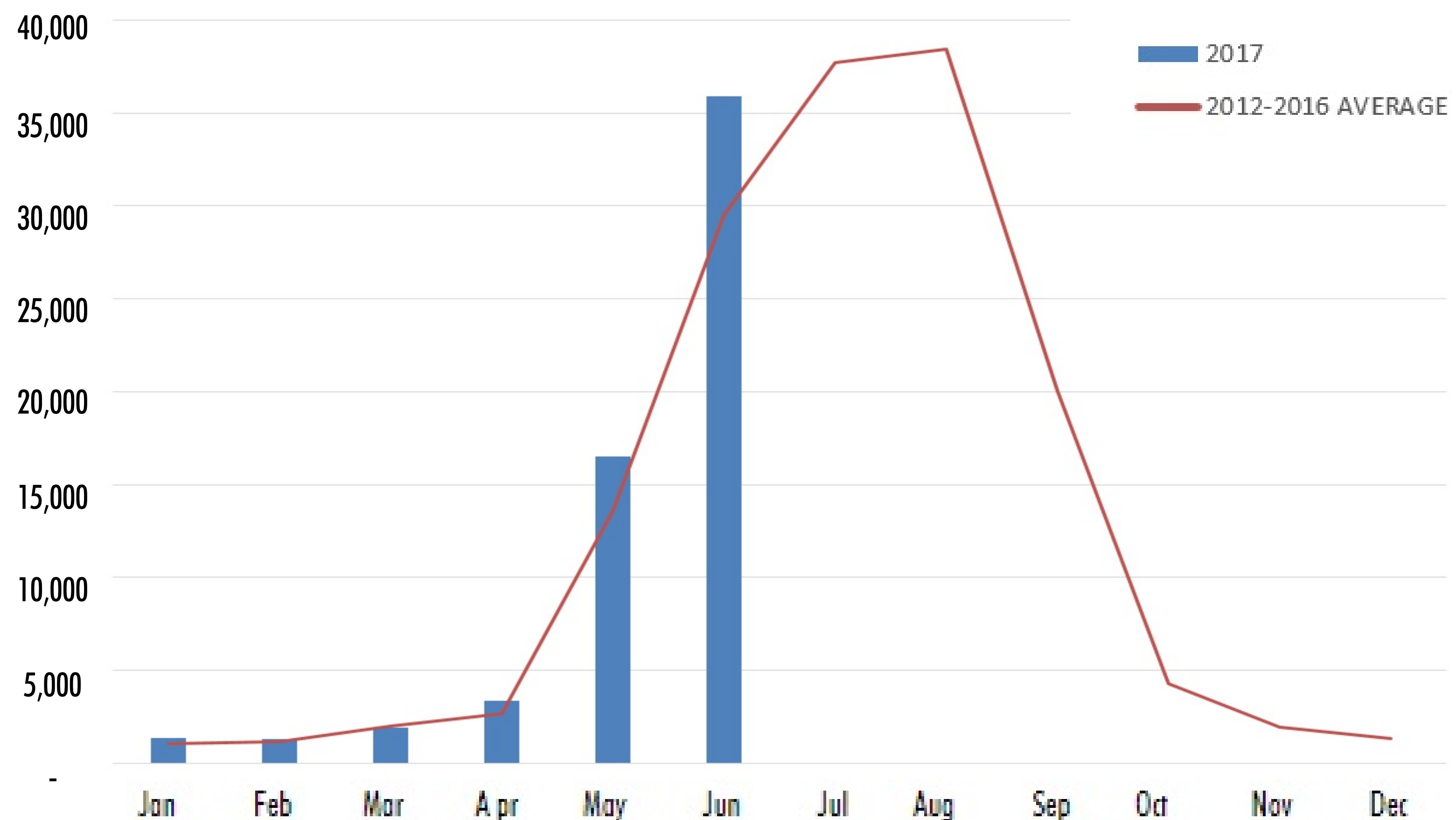
Year-to-date (YTD) overnight visitation for international visitors is 1% lower with 500 fewer visitors than the same period in 2016.

Over the last 5 years overnight visitation has grown by 19% or 9,800 more visitors than the same period in 2013.

YTD overnight visitations in 21% higher than the 5 year average (2012-2016).

Source: Statistics Canada, CANSIM 427-0004.

American and Overseas visitors only, no Canadian visitors are included.



Air Arrivals at Erik Neilson Whitehorse International Airport

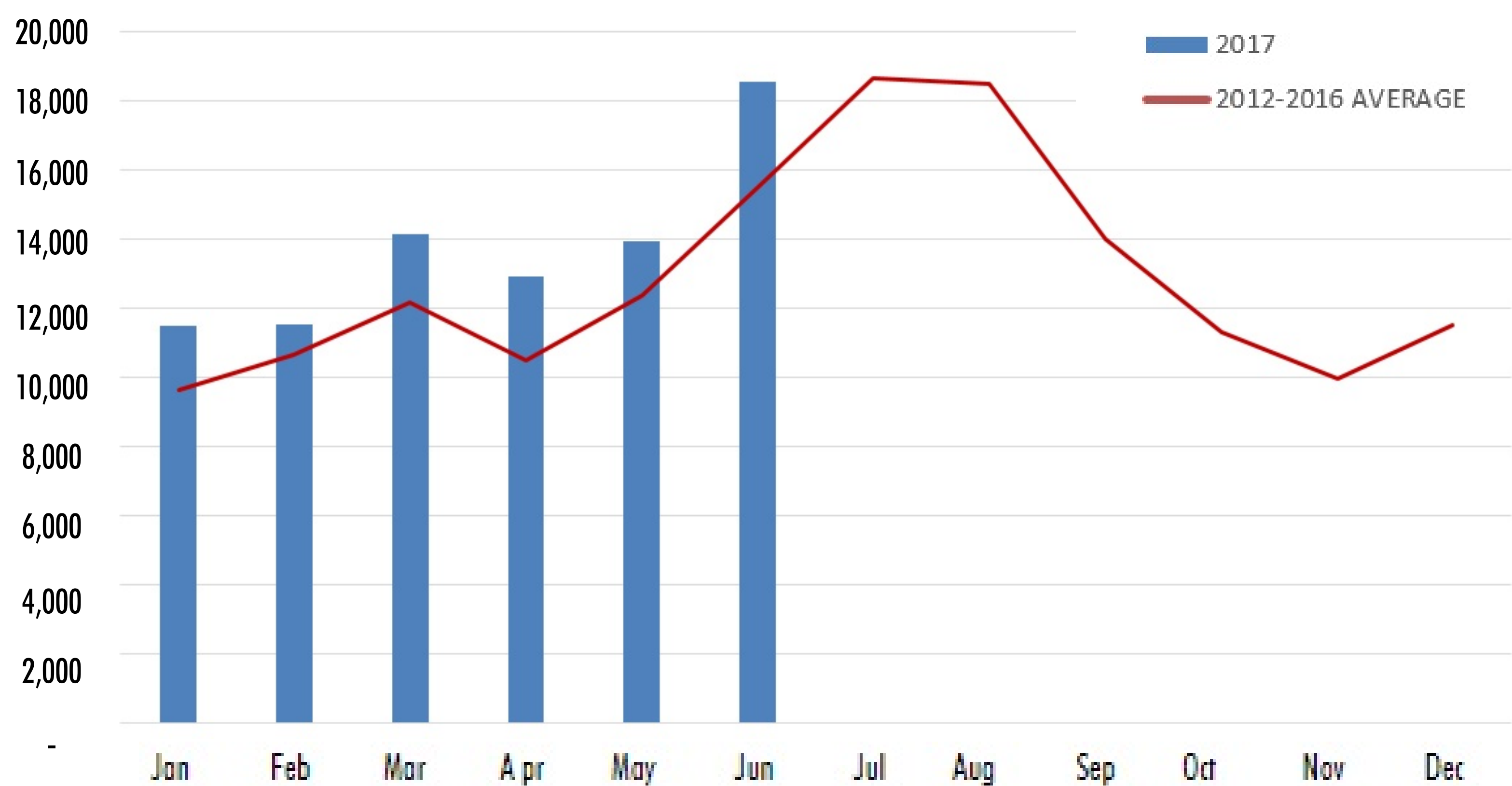
Year to date air arrivals have grown by 5% or 3,800 more passengers than the same period in 2016.

Over the last 5 years, air arrivals have grown by 24% or 15,700 more passengers than in the same period in 2013.

YTD air arrivals are 17% higher than the 5 year average (2012-2016).

Source: Government of Yukon, HPW.

Includes business, pleasure and local air passenger arrivals.



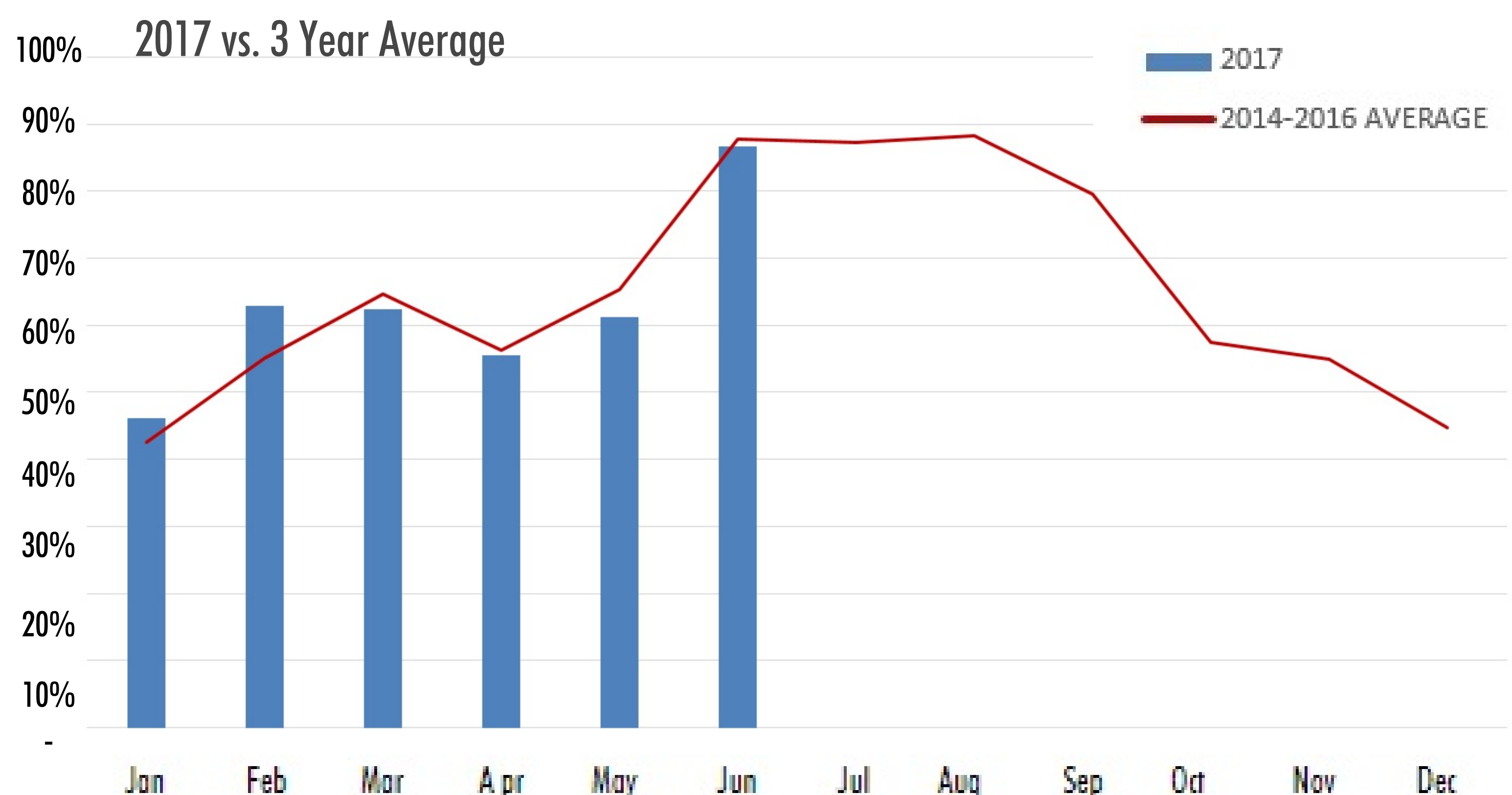
Occupancy at Select Fixed Roof Accommodation

YTD occupancy is 0.6 points higher than the 3 year average* (2014-2016).

YTD Yukon occupancy rates are on par with national rates (62%).

Source: Canadian Tourism Research Institute, Hotels Trends in the Hotel Industry National Market Report; YBS, Monthly Statistics Review.

Figures represent approximately 500 rooms in Yukon and should not be generalized to the whole accommodation market. Figures are presented as an indicator only. *2012-2013 data unavailable.



International Border Crossings (Into Yukon)

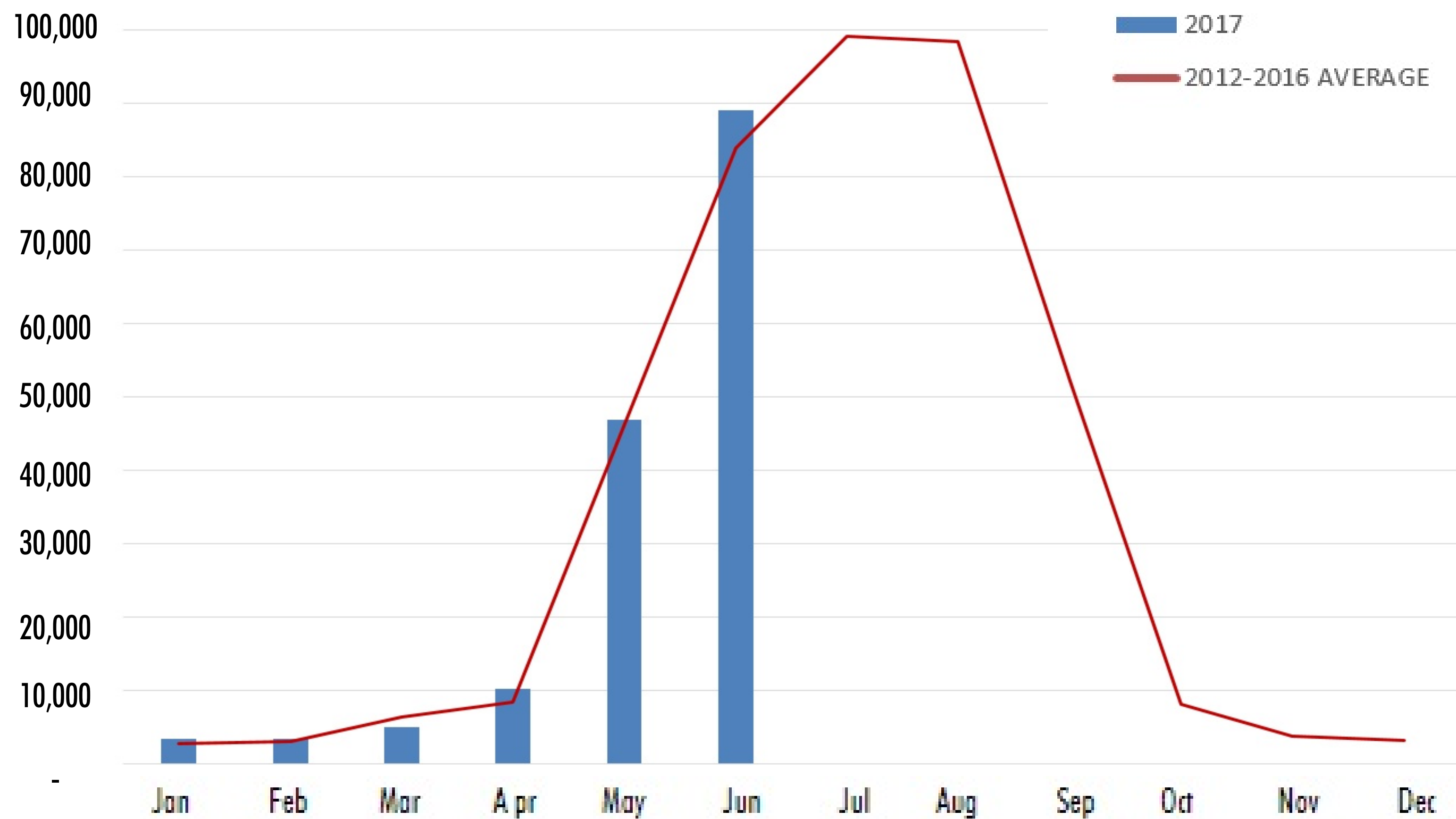
YTD border crossings are 1% higher than in 2016.

The month of April saw a 23% increase in border crossings compared to the 5 year average and a 33% increase compared to April 2016.

YTD crossings through Canadian Border Services Agency ports of entry are 5% higher than the the 5 year average (2012-2016).

Source: Statistics Canada, CANSIM 427-0001.

Excludes travellers entering Yukon via BC on the South Alaska or Stewart-Cassiar Highways, the NWT on the Dempster Highway or on domestic flights. Total includes Yukonners.



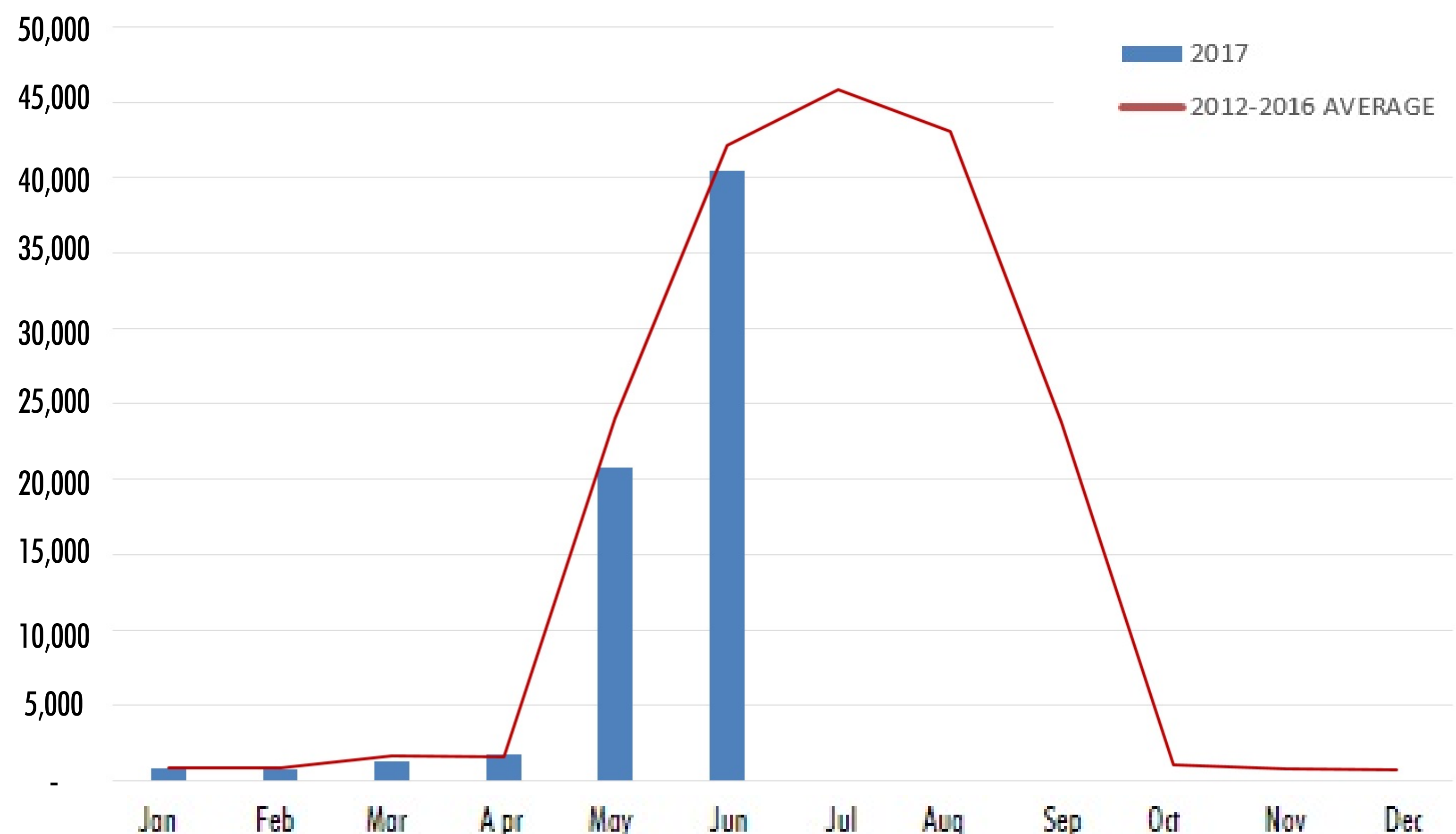
Same Day International Border Crossings (Into Yukon)

YTD same day border crossings are down 1% from 2016.

YTD same day border crossings are down 7% compared to the 5 year average. Overnight border crossings remain constant.

Source: Statistics Canada, CANSIM 427-0001.

Excludes travellers entering Yukon via BC on the South Alaska or Stewart-Cassiar Highways, the NWT on the Dempster Highway or on domestic flights.



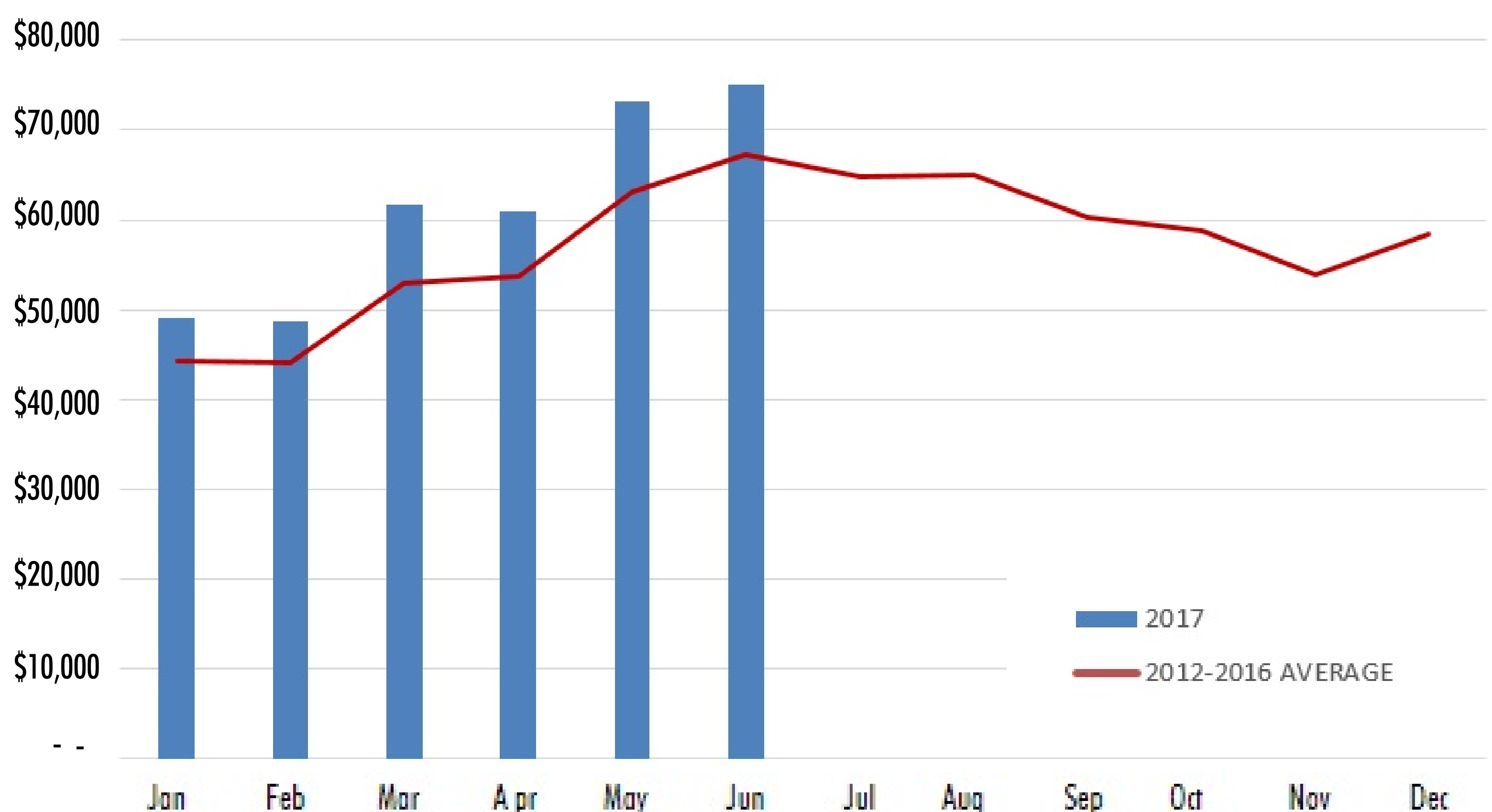
Retail Sales (Total Sales \$000)

YTD retail sales are up 5% (\$15.9 million) from the same period in 2016.

YTD retail sales are up 13% compared to the 5 year average (2012-2016).

Comparatively, national retail sales have increased 7% YTD.

Source: Statistics Canada, CANSIM 080-0020.



2017 YEAR-TO-DATE

Year-to-date (YTD)		JAN	FEB	MAR	APR	MAY	JUN	JUL	AUG	SEP	OCT	NOV	DEC
% YOY* Change		% YOY Change	% YOY Change	% YOY Change	% YOY Change	% YOY Change	% YOY Change	% YOY Change	% YOY Change	% YOY Change	% YOY Change	% YOY Change	% YOY Change
OVERNIGHT VISITATION, by Origin ^{1,4}													
Total	60,300 -1%	1,369 -2%	1,412 -9%	1,911 -24%	3,366 14%	16,502 1%	35,888 -1%						
US	54,451 -2%	1,304 -3%	1,193 -11%	1,765 -25%	3,191 16%	15,348 1%	31,650 -3%						
Overseas	5,839 8%	44 63%	92 33%	146 -5%	175 -9%	1,154 0%	4,238 12%						
AIR ARRIVALS AT ERIK NELSON WHITEHORSE INTERNATIONAL AIRPORT ²													
Arrivals	82,535 5%	11,461 15%	11,532 -6%	14,135 -2%	12,924 18%	13,934 1%	18,549 7%						
OCCUPANCY AT SELECT FIXED ROOF ACCOMMODATIONS ³													
Occupancy	62.5% 2.3	46.2% 3.6	62.9% 20.5	62.4% 0.0	55.5% -1.8	61.2% -4.2	86.7% -4.3						
INTERNATIONAL BORDER CROSSINGS (INTO YUKON) ⁴													
Total	157,792 1%	3,407 -6%	3,413 -4%	5,014 -30%	10,211 33%	46,780 -2%	88,967 2%						
US	109,362 -2%	2,102 -16%	1,964 -17%	3,017 -20%	4,852 5%	31,145 -4%	66,282 0%						
CAN	31,640 7%	1,251 15%	1,351 22%	1,821 -43%	5,081 80%	9,535 2%	12,601 6%						
Other	16,744 8%	54 86%	98 29%	176 -18%	278 11%	6,100 3%	10,038 10%						
SAME DAY INTERNATIONAL BORDER CROSSINGS (INTO YUKON) ⁵													
Total	65,786 -1%	808 -30%	776 ² -26%	1,263 ² -17%	1,764 -8%	20,743 -6%	40,432 4%						
RETAIL SALES (\$000) ⁶													
Total	\$368,835 5%	\$49,169 2%	\$48,701 0%	\$61,750 ² 9%	\$61,020 0%	\$73,195 8%	\$75,000 6%						

*YOY = Year-over-year variance. For Quarter 2, YTD is comparing (Q1+Q2) 2017 to (Q1+Q2) 2016. Monthly data is comparing 2016 to 2017 (e.g. Jan 2016 to Jan 2017).

¹ Source: Statistics Canada, CANSIM 427-0004. Excludes Canadian visitors. ² Source: Government of Yukon, HPW. Includes local air passenger arrivals. ³ Source: Canadian Tourism Research Institute. Figures represent approx. 500 rooms in Yukon only. ^{4/5}

Source: Statistics Canada, CANSIM 427-0001. Excludes travellers entering Yukon via BC by land, the NWT by land or domestic flights. ⁶ Source: Statistics Canada, CANSIM 080-0020. ² Adjusted, June 2017.